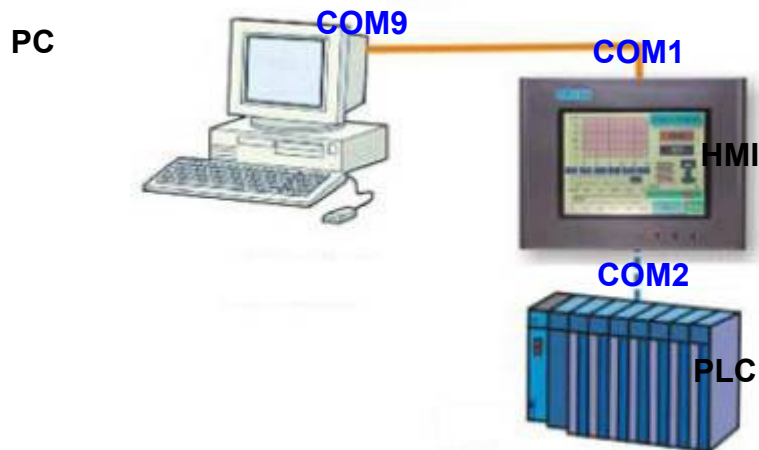


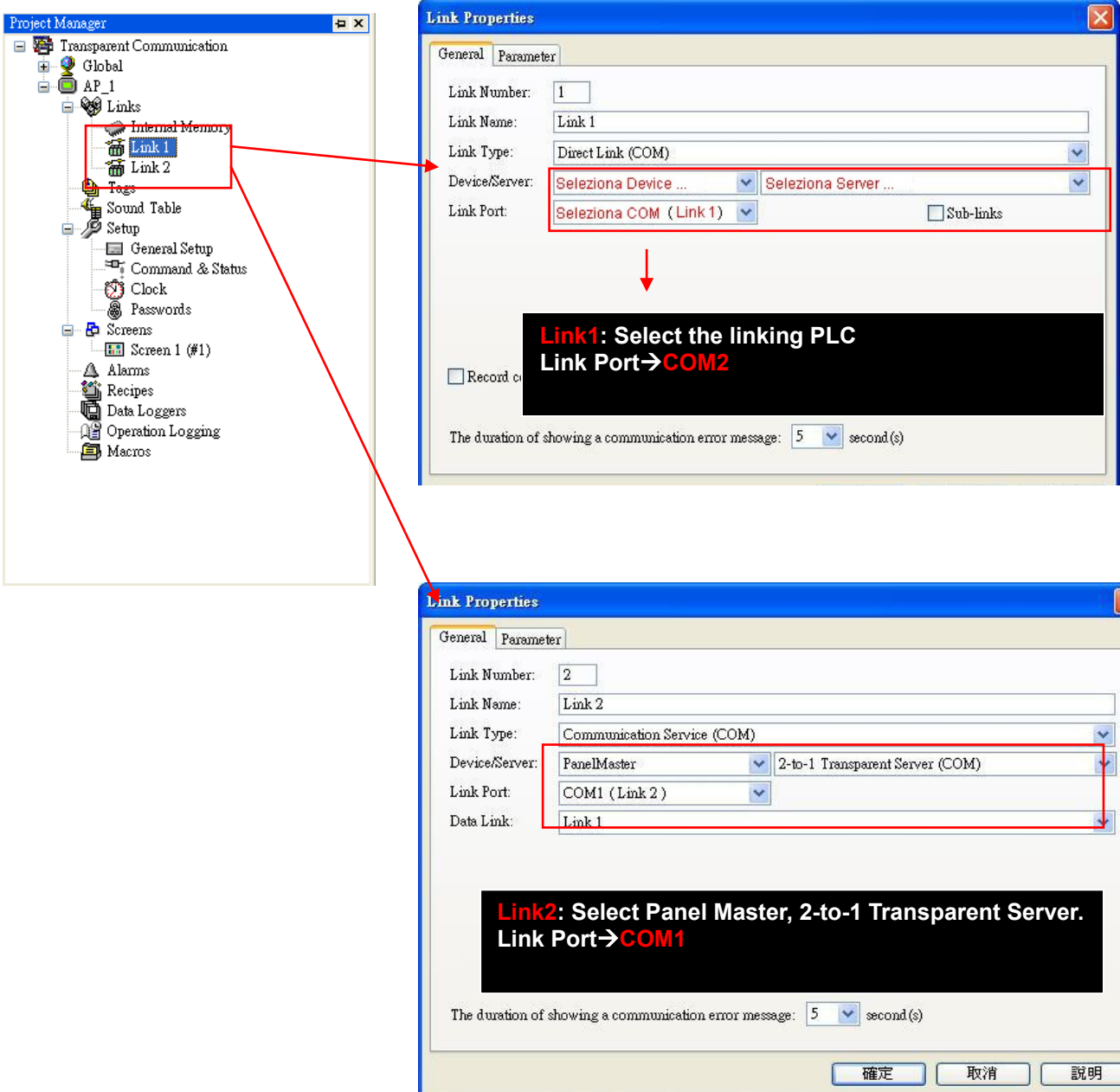
Tech. Note

Transparent Communication

1. Struttura Hardware



2. PM Designer Setup



The image illustrates the setup process for two communication links in the PM Designer software. It shows the Project Manager tree on the left and two instances of the Link Properties dialog box.

Link 1 Setup:

- Link Number:** 1
- Link Name:** Link 1
- Link Type:** Direct Link (COM)
- Device/Server:** Seleziona Device ... / Seleziona Server ...
- Link Port:** Seleziona COM (Link 1) Sub-links

**Link1: Select the linking PLC
Link Port→COM2**

Link 2 Setup:

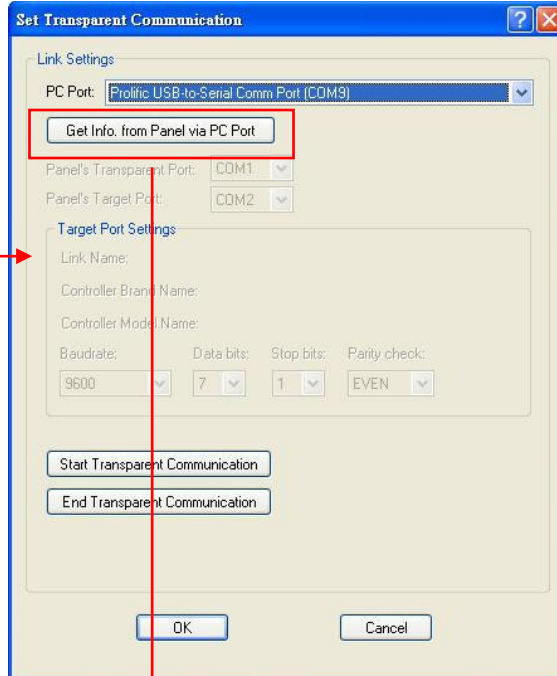
- Link Number:** 2
- Link Name:** Link 2
- Link Type:** Communication Service (COM)
- Device/Server:** PanelMaster / 2-to-1 Transparent Server (COM)
- Link Port:** COM1 (Link 2)
- Data Link:** Link 1

**Link2: Select Panel Master, 2-to-1 Transparent Server.
Link Port→COM1**

The duration of showing a communication error message is set to 5 second(s) for both links.

3. Transparent Communication

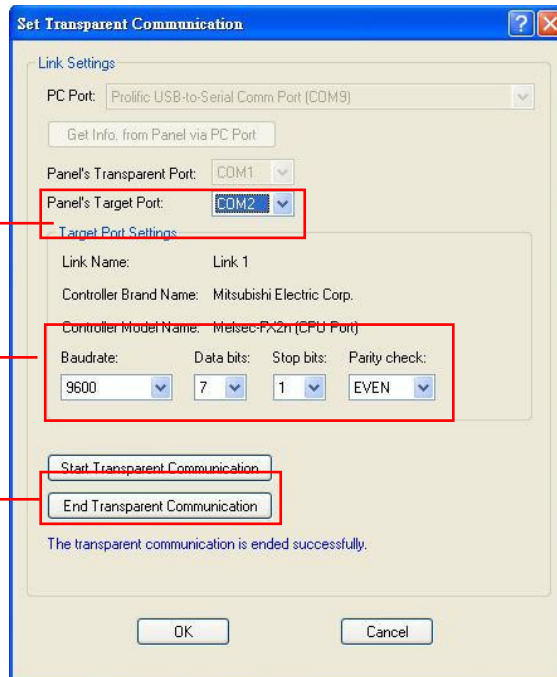
Scegliere "Set Transparent Communication" dal menù "Tools" per settare comunicazione e porta.



Scegliere COM2

Impostazioni Protocollo

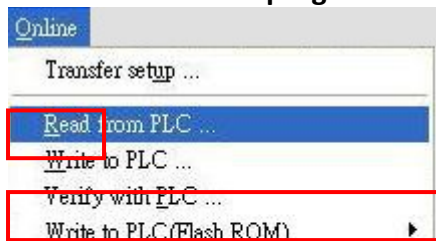
Start Transparent Communication



Messaggio della Transparent Communication sull'HMI.



Comunicazione dal programma del PLC



Reading data from PLC

Transparent Communication da Remoto

Per poter accedere alla Transparent Mode da remoto occorre entrare nelle impostazioni del router ed aprire le seguenti porte:

9349 (Transparent Mode)

9350 (COM Virtuale)