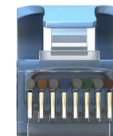
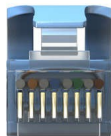


GUIDA ALLA CONNESSIONE E SETTAGGIO HMI/PLC

Comunicazione tra HMI Kite e PLC Omron NJ

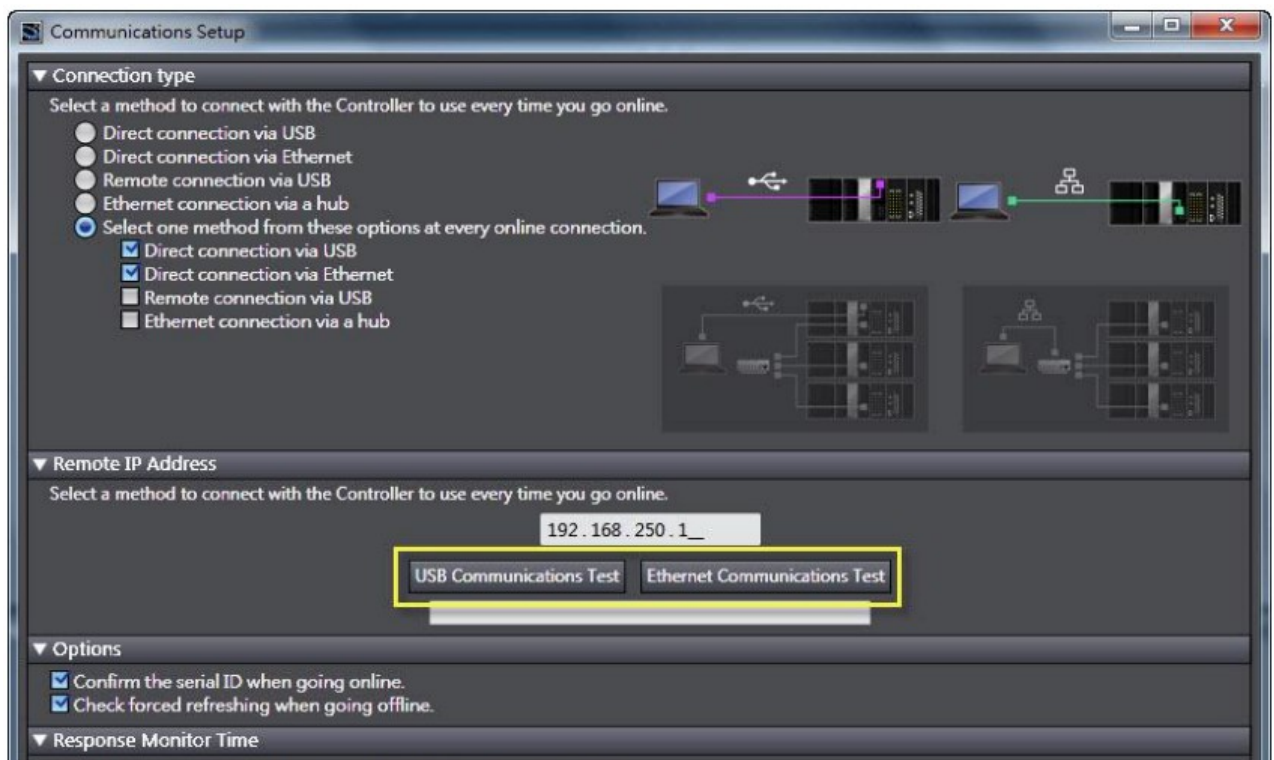
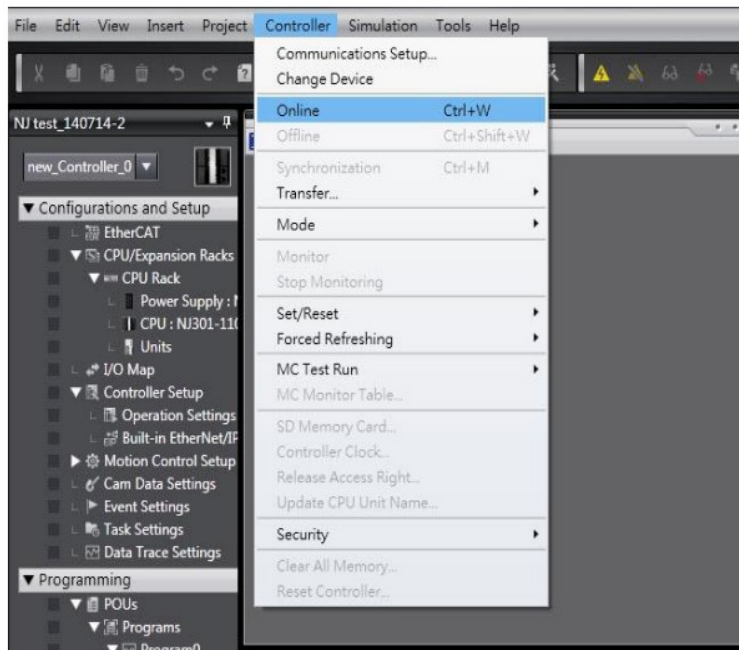


HMI Ethernet Connection (RJ45 Male)	PIN		PIN	PLC (S7 Series) Ethernet Connection (RJ45 Male)
TX (+)	1	↔	1	RX (+)
TX (-)	2	↔	2	RX (-)
RX (+)	3	↔	3	TX (+)
	4		4	
	5		5	
RX (-)	6	↔	6	TX (-)
	7		7	
	8		8	

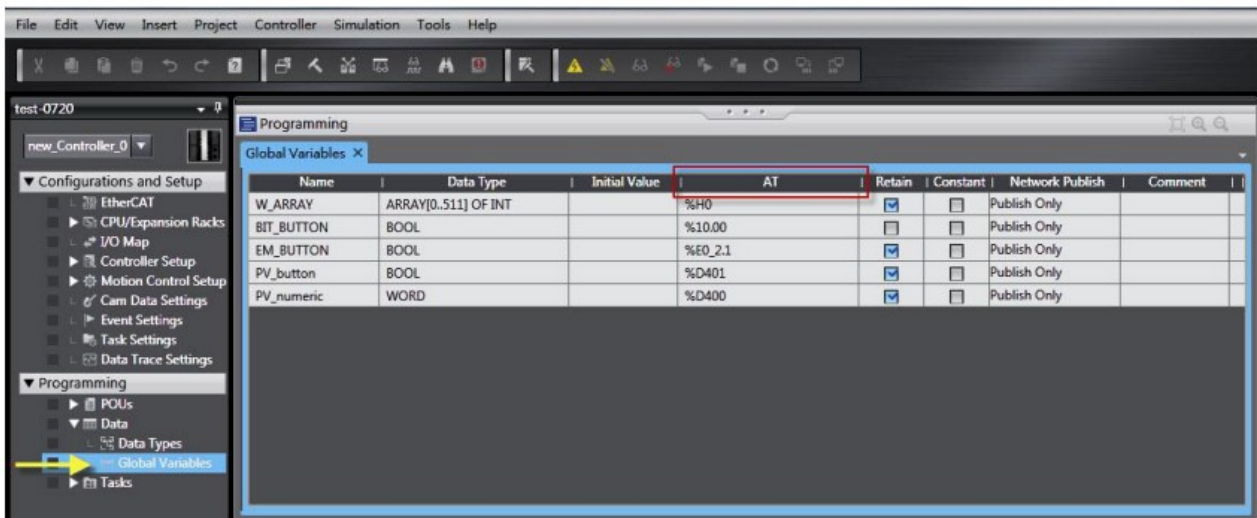
Configurazioni PLC Omron NJ

1. Connettere il PLC NJ:

Se non si è a conoscenza dell'indirizzo IP del controllore NJ, è possibile connettersi via USB la prima volta, e premere la voce "Online":



2. Programming > Global Variables



3. Nella seguente tabella sono elencati gli indirizzi di memoria:

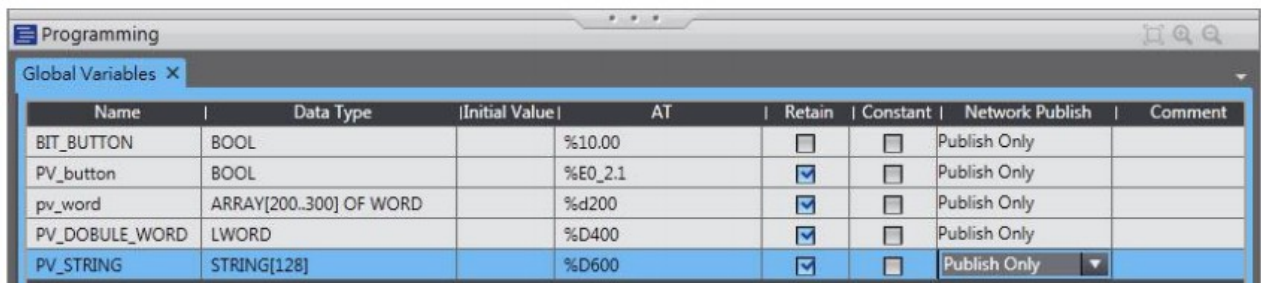
Area	Setting range	Format to enter
CIO Area	CIO 0 to CIO 6143	%0 to %6143
Work Area	W000 to W511	%W0 to %W511
Holding Area	H0 to H1535	%H0 to %H1535
DM Area	D0 to D32767	%D0 to %D32767
EM Area	E0_0 to E 9 _32767	%E0_0 to %E 9 _32767

4. tipo di dati supportati:

<i>Data type</i>	<i>Data range</i>
<i>BOOL</i>	<i>FALSE, TRUE</i>
<i>WORD</i>	<i>H0000~FFFF</i>
<i>DWORD</i>	<i>H00000000~FFFFFFFF</i>
<i>STRING</i>	<i>UTF-8</i>

** Aggiungere il “%” prima dell'indirizzo per specificare l'aria di memoria:

5. Scaricare le variabili nel PLC:

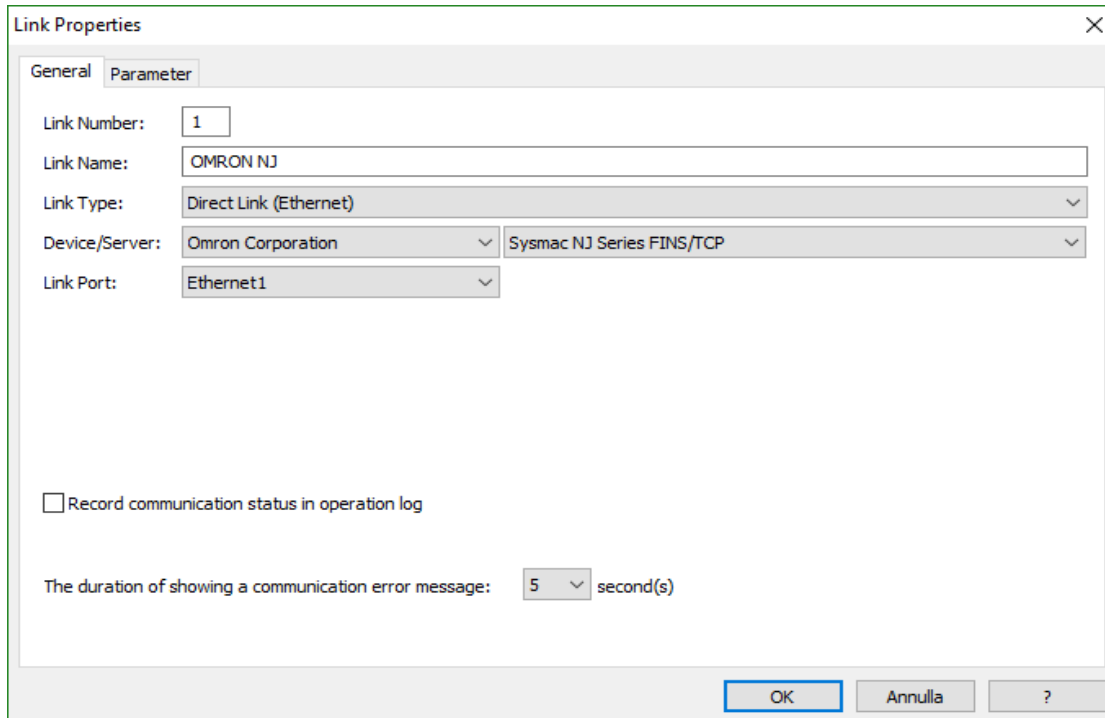


Name	Data Type	Initial Value	AT	Retain	Constant	Network Publish	Comment
BIT_BUTTON	BOOL		%I0.00	<input type="checkbox"/>	<input type="checkbox"/>	Publish Only	
PV_button	BOOL		%E0_2.1	<input checked="" type="checkbox"/>	<input type="checkbox"/>	Publish Only	
pv_word	ARRAY[200..300] OF WORD		%d200	<input checked="" type="checkbox"/>	<input type="checkbox"/>	Publish Only	
PV_DOBULE_WORD	LWORD		%D400	<input checked="" type="checkbox"/>	<input type="checkbox"/>	Publish Only	
PV_STRING	STRING[128]		%D600	<input checked="" type="checkbox"/>	<input type="checkbox"/>	Publish Only	

PM Object Data type	NJ table Data type	AT table	Description
<i>Bit</i>	<i>BOOL</i>	<i>%E0_2.1</i>	<i>The second bit of the second word on the "E0" area.</i>
<i>Word</i>	<i>WORD</i>	<i>%D200</i>	<i>The word data at "D200" address.</i>
<i>Double Word</i>	<i>LWORD</i>	<i>%D400</i>	<i>The double-word data at "D400" address.</i>

Configurazioni HMI

1. Selezionare il driver Omron NJ dall'elenco dei driver:



Link Properties

General Parameter

Link Number: 1

Link Name: OMRON NJ

Link Type: Direct Link (Ethernet)

Device/Server: Omron Corporation Sysmac NJ Series FINS/TCP

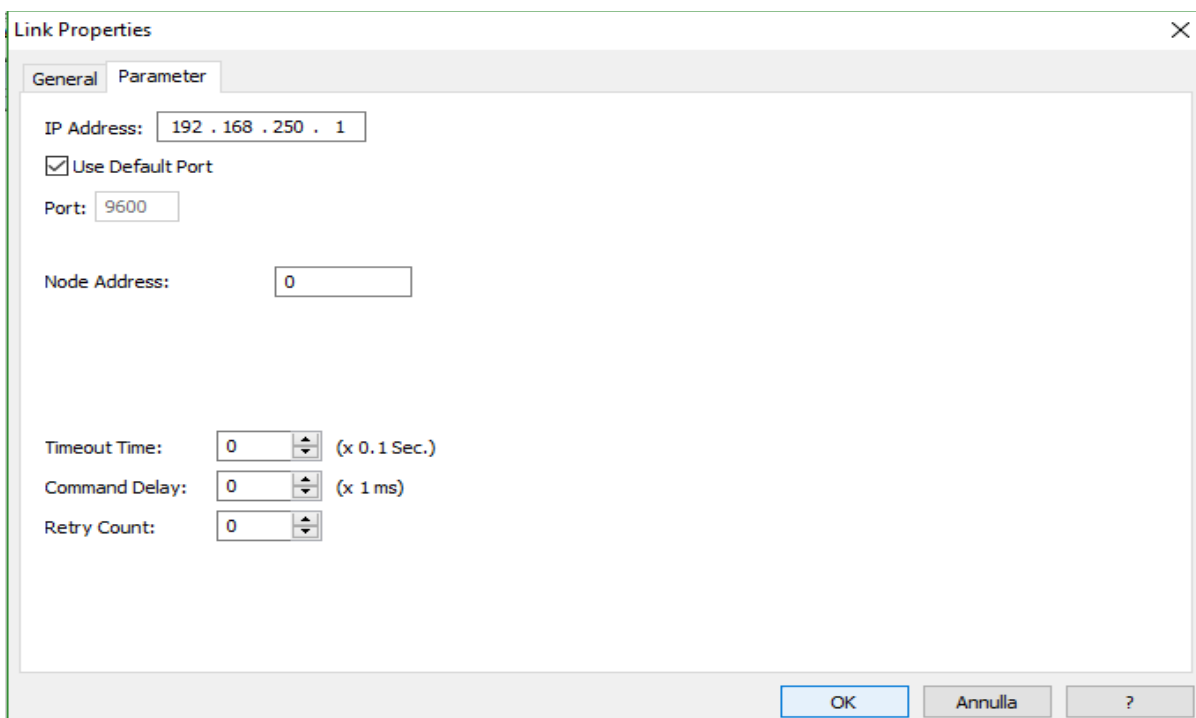
Link Port: Ethernet1

Record communication status in operation log

The duration of showing a communication error message: 5 second(s)

OK Annulla ?

2. Indicare l'indirizzo IP del PLC nei "parameter" del link di comunicazione



Link Properties

General Parameter

IP Address: 192 . 168 . 250 . 1

Use Default Port

Port: 9600

Node Address: 0

Timeout Time: 0 (x 0.1 Sec.)

Command Delay: 0 (x 1 ms)

Retry Count: 0

OK Annulla ?

Indirizzamento per il PLC Omron NJ

Bit Devices:

Bit Device	Address Range	Block Address	Comment
%n.b	n: 0~6143; b: 0~15	b=0	
%Wn.b	n: 0~511; b: 0~15	b=0	
%Hn.b	n: 0~1535; b: 0~15	b=0	
%E0_n.b	n: 0~32767; b: 0~15	b=0	
%E1_n.b	n: 0~32767; b: 0~15	b=0	
%E2_n.b	n: 0~32767; b: 0~15	b=0	
%E3_n.b	n: 0~32767; b: 0~15	b=0	
%E4_n.b	n: 0~32767; b: 0~15	b=0	
%E5_n.b	n: 0~32767; b: 0~15	b=0	
%E6_n.b	n: 0~32767; b: 0~15	b=0	
%E7_n.b	n: 0~32767; b: 0~15	b=0	
%E8_n.b	n: 0~32767; b: 0~15	b=0	
%E9_n.b	n: 0~32767; b: 0~15	b=0	

Word Devices:

Word Device	Address Range	Size	Comment
%n	n: 0~6143	Word	
%Wn	n: 0~511	Word	
%Hn	n: 0~1535	Word	
%Dn	n: 0~32767	Word	
%E0_n	n: 0~32767	Word	
%E1_n	n: 0~32767	Word	
%E2_n	n: 0~32767	Word	
%E3_n	n: 0~32767	Word	
%E4_n	n: 0~32767	Word	
%E5_n	n: 0~32767	Word	
%E6_n	n: 0~32767	Word	
%E7_n	n: 0~32767	Word	
%E8_n	n: 0~32767	Word	
%E9_n	n: 0~32767	Word	