

GUIDA ALLA CONNESSIONE E SETTAGGIO HMI/PLC

Comunicazione tra HMI Kite e PLC Mitsubishi FX2N-FX3U



Parametri di comunicazione:

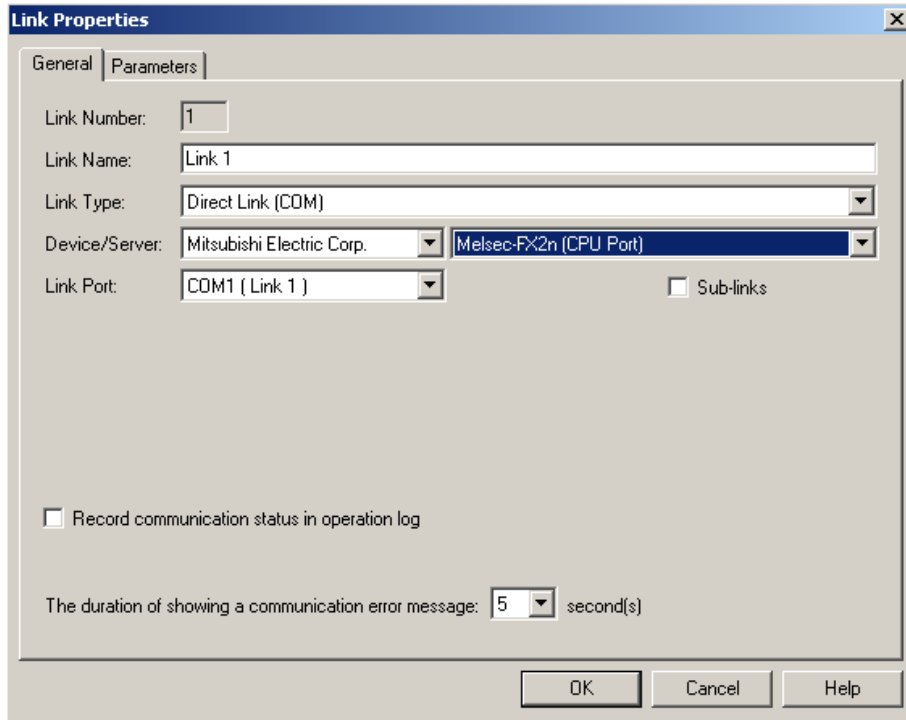
Per il PLC FX2N/FX3U, i parametri di comunicazione sono impostati come di seguito:
 Velocità di trasmissione (Baudrate): 9600 bps
 Format Comunicazione : 7, even, 1



HMI COM Connection (DB9 Male)	PIN		PIN	PLC (FX2n/3U) COM Connection (RS422)
TXD +	1	↔	2	RDB
TXD -	6	↔	1	RDA
RXD +	4	↔	7	SDB
RXD -	9	↔	4	SDA
GND	5	↔	3	GS

Configurazione HMI

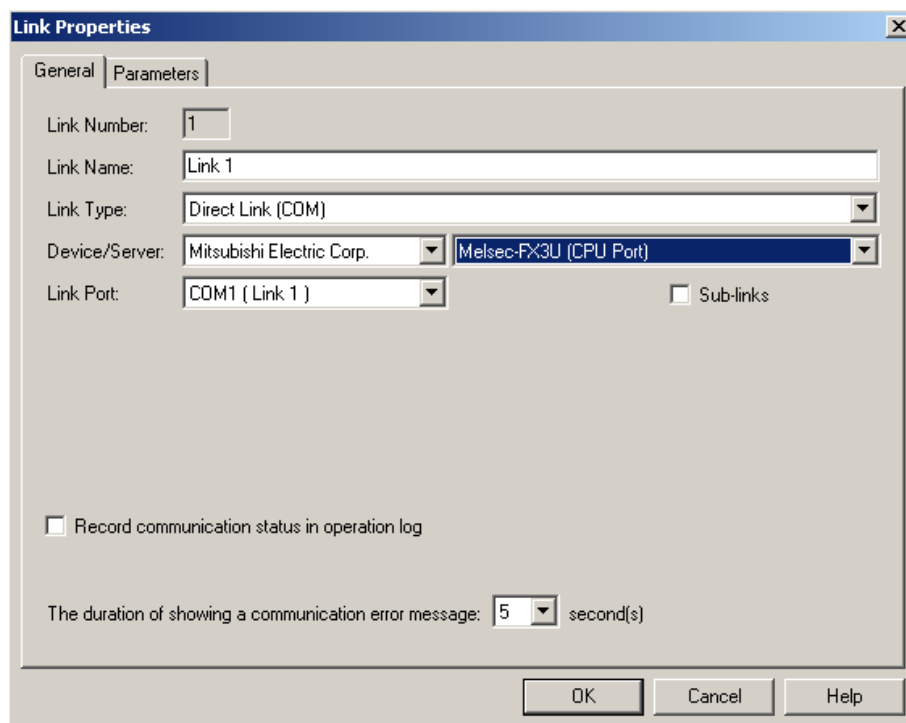
1) Selezionare il **Link Type**: Direct Link (COM) e il **Device/Server**: Mitsubishi Electric Corp. – Melsec-FX2n (CPU Port) o Melsec-FX3U (CPU Port)



The screenshot shows the 'Link Properties' dialog box with the 'General' tab selected. The configuration is as follows:

- Link Number: 1
- Link Name: Link 1
- Link Type: Direct Link (COM)
- Device/Server: Mitsubishi Electric Corp. (selected), Melsec-FX2n (CPU Port) (selected)
- Link Port: COM1 (Link 1)
- Sub-links:
- Record communication status in operation log:
- The duration of showing a communication error message: 5 second(s)

Buttons: OK, Cancel, Help

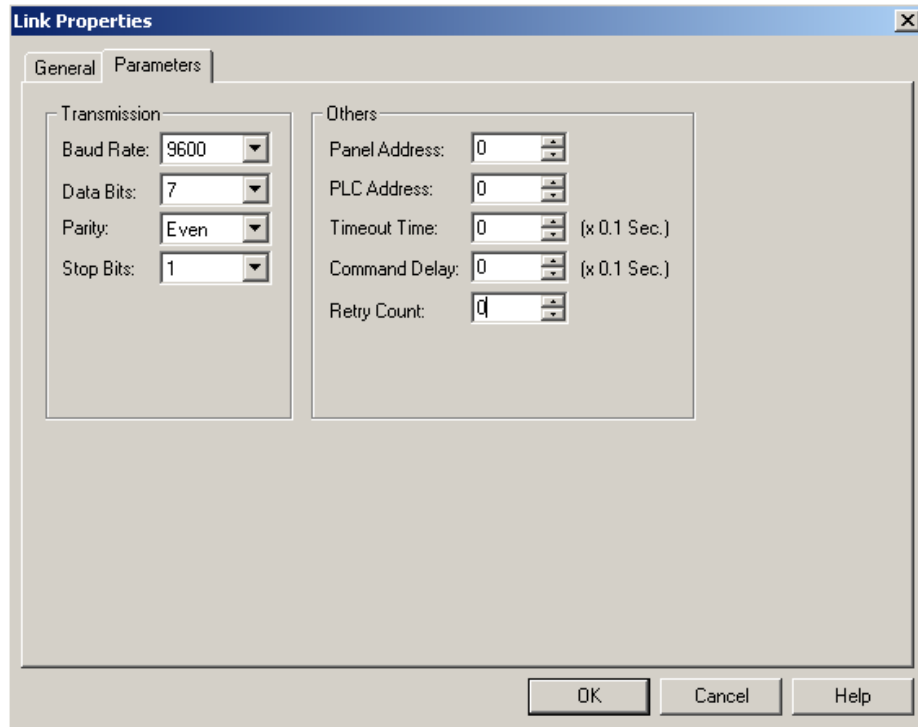


The screenshot shows the 'Link Properties' dialog box with the 'General' tab selected. The configuration is as follows:

- Link Number: 1
- Link Name: Link 1
- Link Type: Direct Link (COM)
- Device/Server: Mitsubishi Electric Corp. (selected), Melsec-FX3U (CPU Port) (selected)
- Link Port: COM1 (Link 1)
- Sub-links:
- Record communication status in operation log:
- The duration of showing a communication error message: 5 second(s)

Buttons: OK, Cancel, Help

2) **Settare i parametri di comunicazione identici a quelli configurati sul PLC.**



Indirizzamento per il PLC Mitsubishi Melsec-FX2n

Bit Devices:

Bit Device	Address Range	Block Address	Comm
Cn	n: 0~255	n=8q	
Mn	n: 0~3071	n=8q	
Mn	n: 8000~8255	n=8q	
Sn	n: 0~999	n=8q	
Tn	n: 0~511	n=8q	
Xn	n: octal 0~777	n=8q	
Yn	n: octal 0~777	n=8q	

Close

Word Devices:

Word Device	Address Range	Size	Comment
Cn	n: 0~199	Word	
Cn	n: 200~255	32 bits	
Dn	n: 0~7999	Word	
Dn	n: 8000~8255	Word	
Mn	n: 0~3071; n=8q	Byte	
Mn	n: 8000~8255; n=8q	Byte	
Sn	n: 0~999; n=8q	Byte	
Tn	n: 0~511	Word	
Xn	n: octal 0~777; n=8q	Byte	
Yn	n: octal 0~777; n=8q	Byte	
RTCn	n: 0~6	Word	

Close

Indirizzamento per il PLC Mitsubishi Melsec-FX2n

Bit Devices:

Bit Device	Address Range	Block Address	Comm
Cn	n: 0~255	n=8q	
Mn	n: 0~7679	n=8q	
Mn	n: 8000~8511	n=8q	
Sn	n: 0~1023	n=8q	
Tn	n: 0~511	n=8q	
Xn	n: octal 0~777	n=8q	
Yn	n: octal 0~777	n=8q	
Sn	n: 1024~4095	n=8q	

Close

Word Devices:

Word Device	Address Range	Size	Comment
Cn	n: 0~199	Word	
Cn	n: 200~255	32 bits	
Dn	n: 0~7999	Word	
Dn	n: 8000~65535	Word	
Mn	n: 0~7679; n=8q	Byte	
Mn	n: 8000~8511; n=8q	Byte	
Sn	n: 0~1023; n=8q	Byte	
Tn	n: 0~511	Word	
Xn	n: octal 0~777; n=8q	Byte	
Yn	n: octal 0~777; n=8q	Byte	
Rn	n: 0~32767	Word	
Sn	n: 1024~4095; n=8q	Byte	

Close