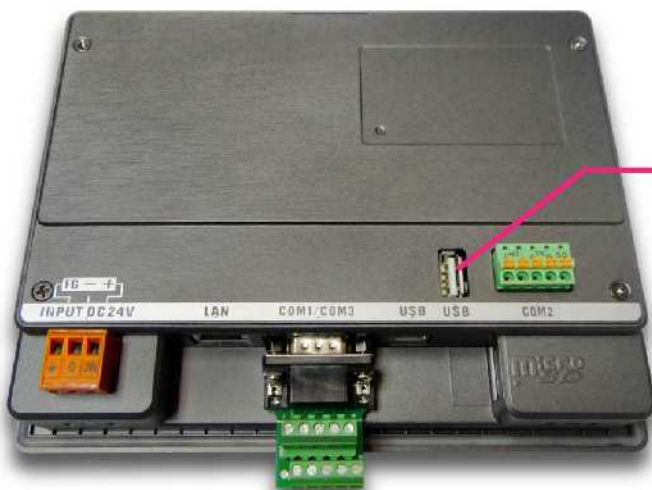


Software Function Guide

How to use Barcode Reader in PM Designer



Designed to be Outstanding



Barcode Scanner

Introduction of Barcode Reader

Barcode Reader is a reading machine which can read the printed barcode.

Like image scanner, Barcode Reader also has illuminant, lens and the photo sensor (ADC) which can interpret optical pulse into electronic signal. The difference is that the Barcode Reader almost includes the interpreted image information of descrambler, and conveys the result of decoding to the output interface of Barcode Reader.

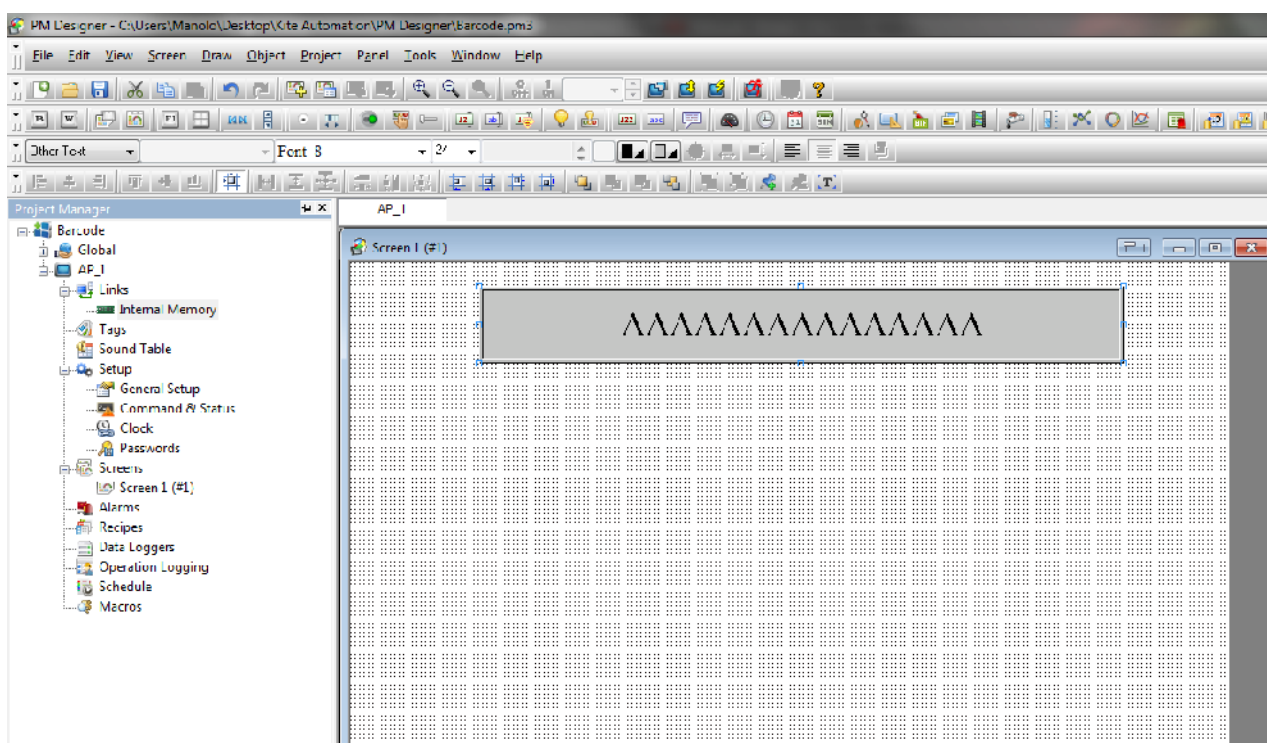
Setting

Software : PM Designer v2.0

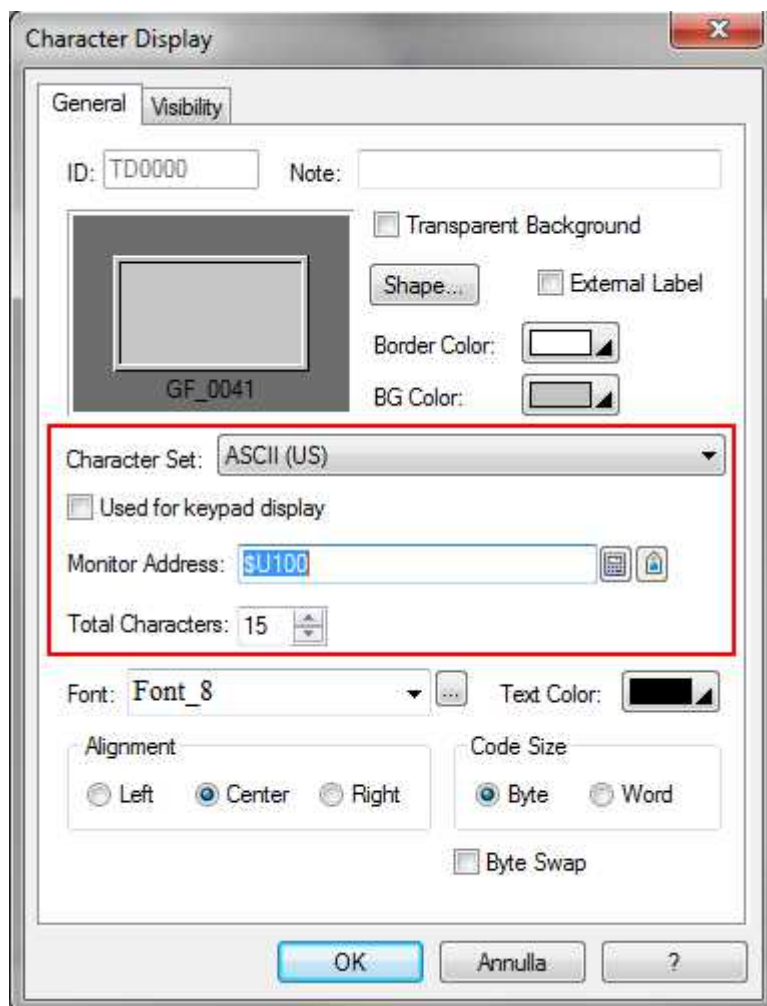
Hardware : PT Series (the model with USB port)

Operation : Software setting

(1) Enter PM Designer V2.0, and set a project



- (2) Create word monitor in the project as the red frame of the picture above; then set the property of word monitor as the picture below.**

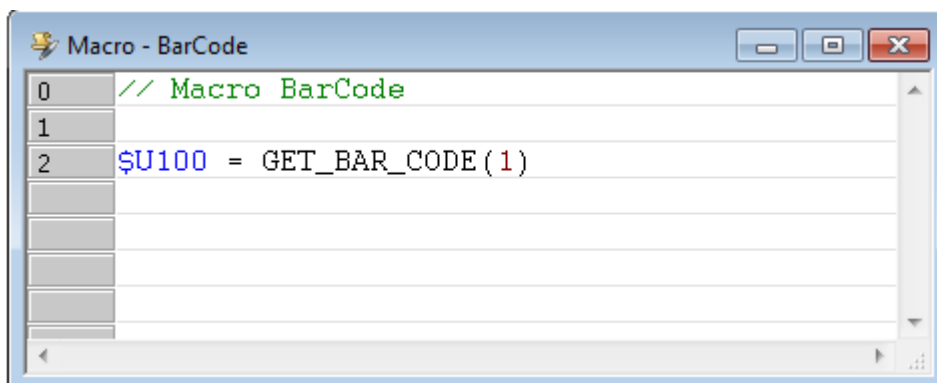


**Create a macro in the project as the setting of the picture below:
\$U100 is the address of the word monitor.**

GET_BAR_CODE() is a macro function, which is the function to get the barcode read from the

barcode reader connected to the assigned USB port.

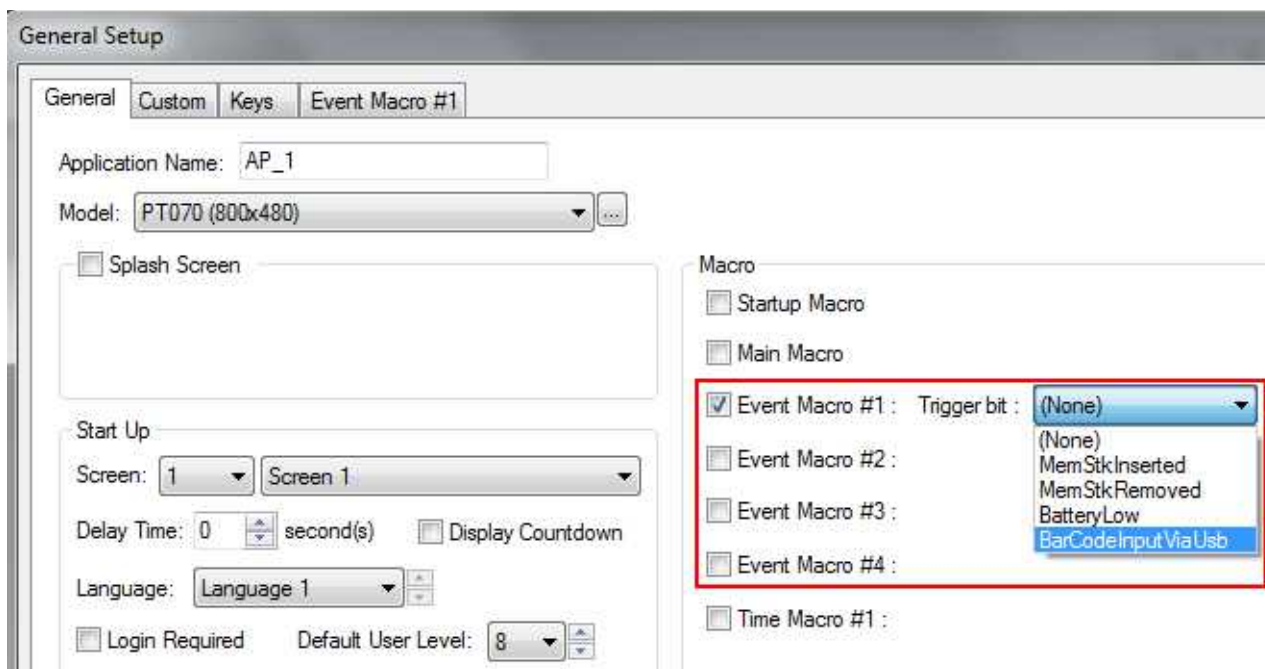
The number inside the parentheses is the assigned number of USB port, which can only be set to 1 in PT series.



(4) Due to GET_BAR_CODE() can only be use in event micro, open the setting of micro as the picture below:

Choose BarCodeInputViaUsb in the trigger location of event micro.

Click "Yes" and start the micro.



After inserting Barcode Reader into the USB Port behind PT and executing the program, the

user can get the product barcode

