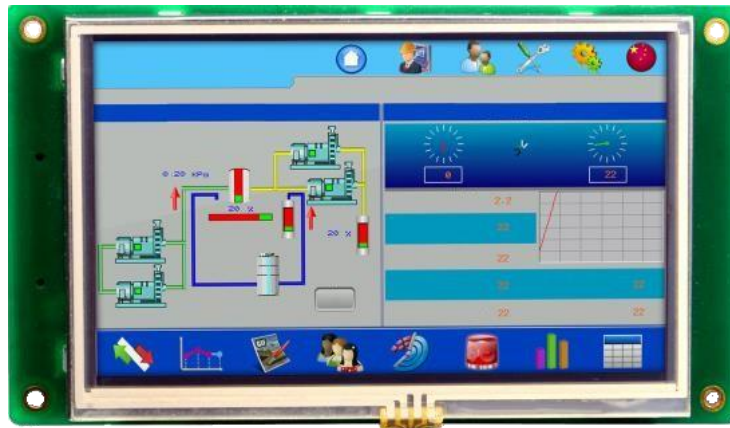


# FD80480-S050-A8

---



Display Emotion

## Product specification

Hardware Parameter	Display	5.0''16:9 TFT LCD display
	Resolution (WxH)	800x480
	Colors	65K
	Brightness	300 cd/m <sup>2</sup>
	Backlight	LED
	LCD Life	50000 hours
	Touch Panel	4-line industrial resistive touch screen
	CPU	ARM Cortex-A8 600MHz
	Memory	128MB Flash + 128MB DDR3
	RTC	Built in
	SD Card	Yes
	Ethernet	None
	USB Port	1 USB Slave 2.0 port, 1 USB Host 2.0 port
	Download Project	USB Slave/U-disc /Ethernet
	COM Port	COM1 : TTL LEV COM2 : RS232/485 COM3 : TTL LEV COM4 : RS232
Electrical Specifications	Input Power	24Vdc, working range 8V~28V (Optional DC 5V input)
	Power Consumption	<5W

Display Emotion

## Product specification

---

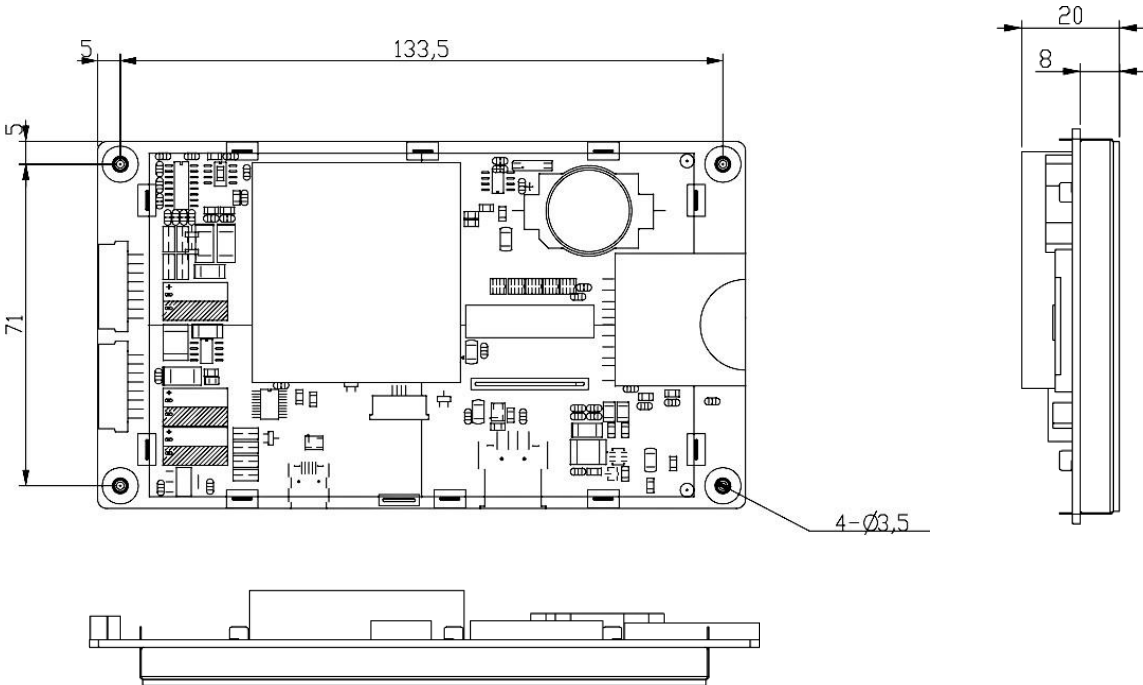
Environmental Specifications	Operating Temperature	-20~70°C
	Storage Temperature	-30~80°C
	Operating Humidity	10~90%RH (Non-condensate)
	Vibration Endurance	10~25Hz(X,Y,Z direction 2G/30min)
	Cooling Method	Natural Cooling
Mechanical Index	Dimension	148.8 x 81.0 x 20.0 mm
	Panel Cutout	122.0 x 77.0 mm
	Weight	About 300g

## Port Illustration

J1	Definition	Illustration
1	24V	External DC power supply 24V, supporting 8~28V input
2	24V	External DC power supply 24V, supporting 8~28V input
3	GND	External power supply 0V
4	GND	External power supply 0V
5	COM2 RS232_RXD RS485_B-	COM2 RS232 Receiving Pin, Connecting TXD of 232 external device COM2 RS485 pin B-
6	COM2 RS232_TXD RS485_A+	COM2 RS232 Sending pin, connecting RXD of 232 external device COM2 RS485 pin A+
7	COM4 RS232_RXD	COM4 RS232 Receiving Pin, Connecting TXD of 232 external device
8	COM4 RS232_TXD	COM4 RS232 Sending pin, connecting RXD of 232 external device

J2	Definition	Illustration ( Default is not soldered
1	5V	External DC power supply 5V
2	5V	External DC power supply 5V
3	GND	External power supply 0V
4	GND	External power supply 0V
5	COM1_RX	COM1_RX Receiving Pin, TTL LEV, Connecting TX of CPU of external device
6	COM1_TX	COM1_TX Receiving Pin, TTL LEV, Connecting RX of CPU of external device
7	COM3_RX	COM3_RX Receiving Pin, TTL LEV, Connecting TX of CPU of external device
8	COM3_TX	COM3_TX Receiving Pin, TTL LEV, Connecting RX of CPU of external device

# Size



Display Emotion