

PLC Connection Guide

TN524D

Communication settings between Yaskawa MP Series and PanelMaster
(Modbus TCP/IP: C45012; Release Version: PM Designer V1.2.25)



Designed to be Outstanding

©Revision Record

Revision	Date	Content	Owner
----------	------	---------	-------

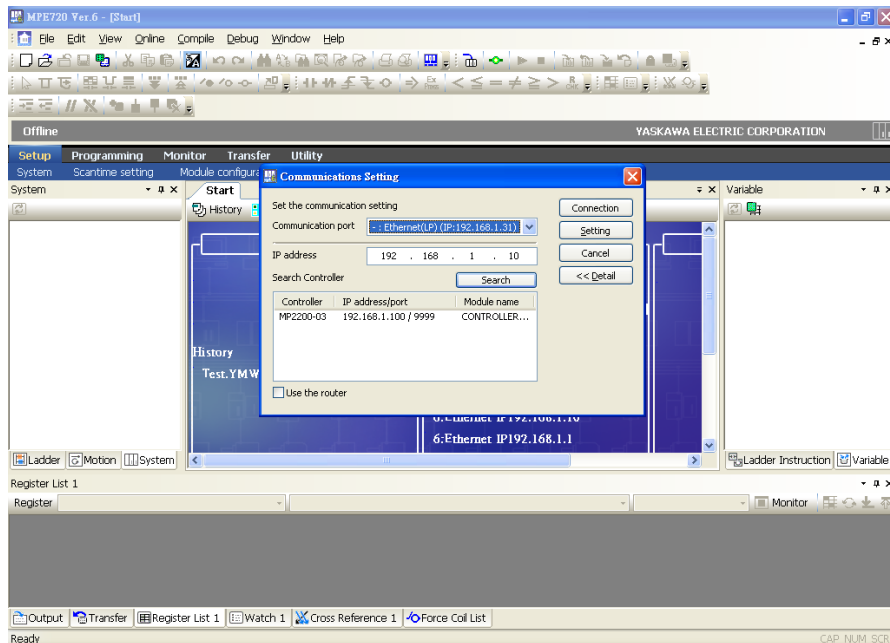
Preface

This tech note introduces how to connect Yaskawa MP Series (Modbus TCP/IP) with PanelMaster HMI.

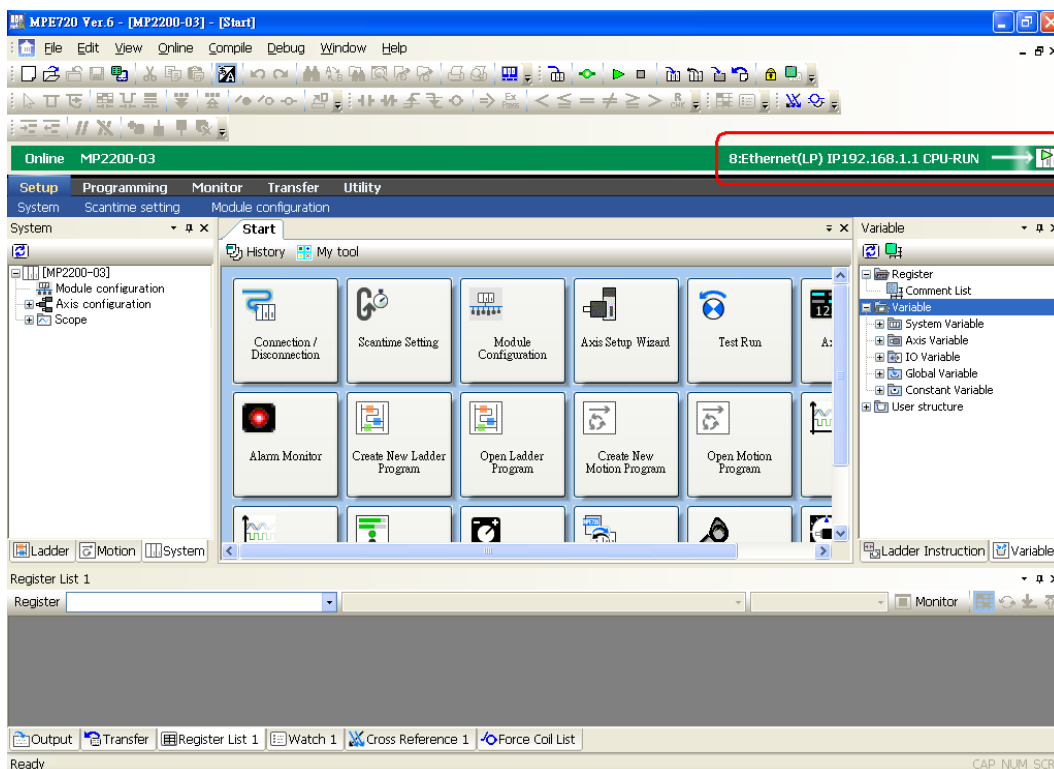


1) PLC Parameter setting:

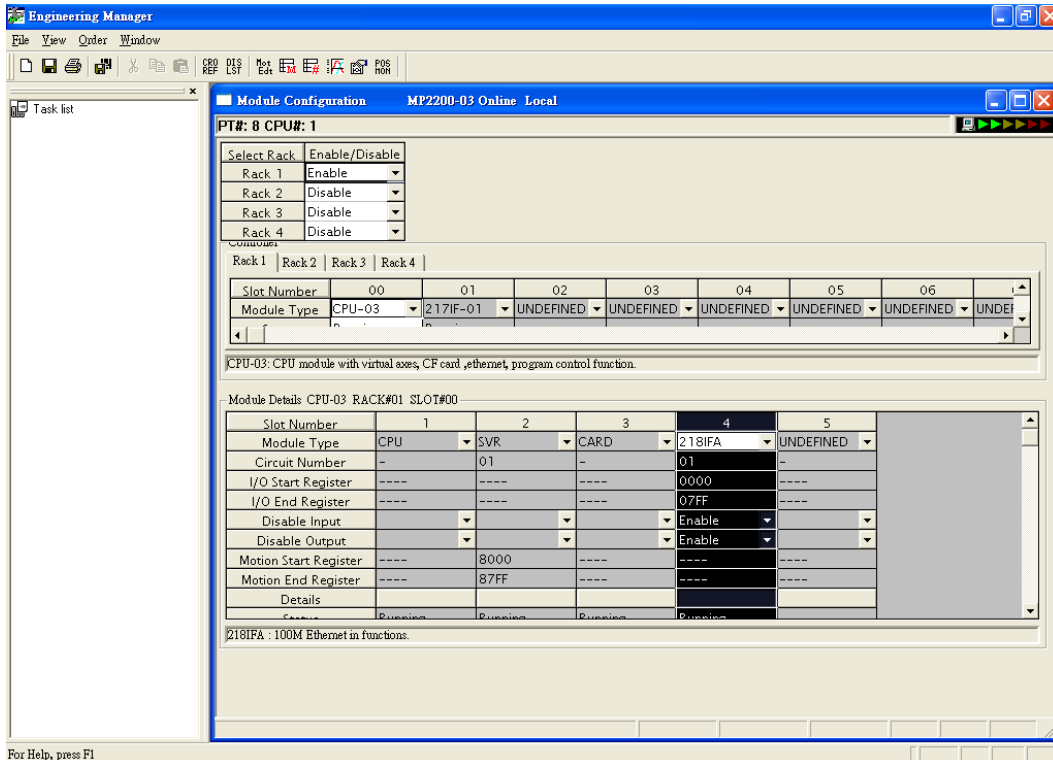
a) Please install the program software “MPE720 Ver6.2” to your PC and then you can use the Ethernet to link with the Yaskawa MP Series Controller. If you do not understand the IP address of the Yaskawa controller, please adjust the E-TEST/TEST DIP Switch to “ON” and use the cross-over Ethernet cable to search its IP/Port.



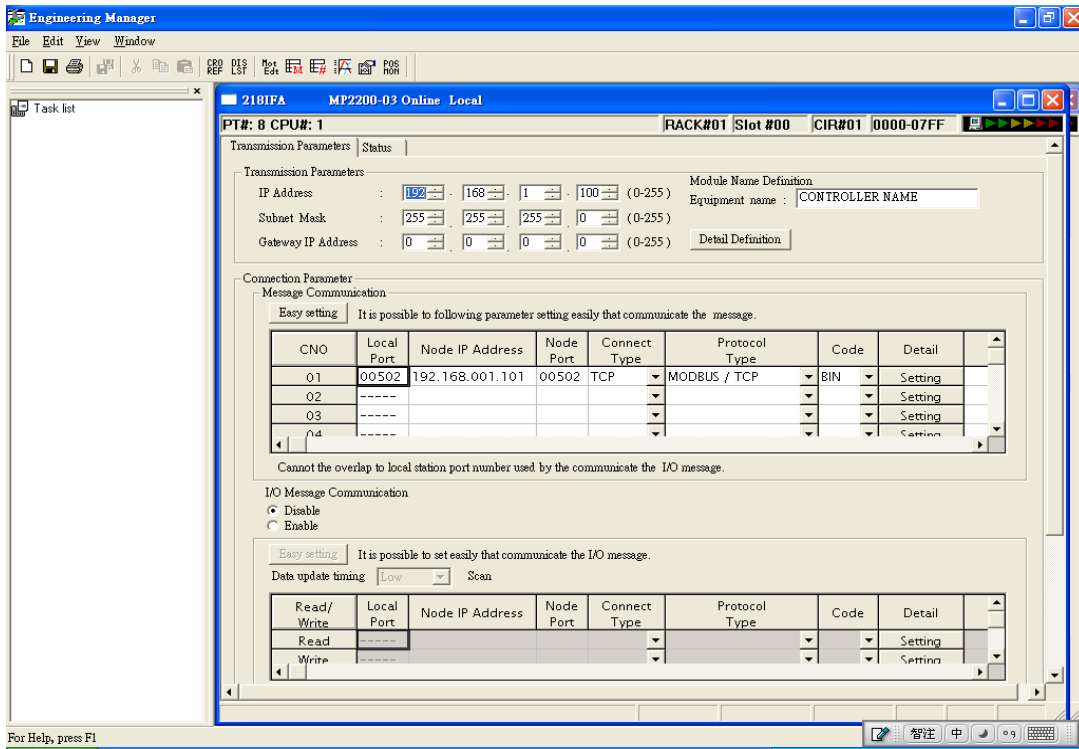
b) When you get its IP, please adjust the E-TEST/TEST DIP Switch to “OFF” and use the software to link with the MP Series Controller.

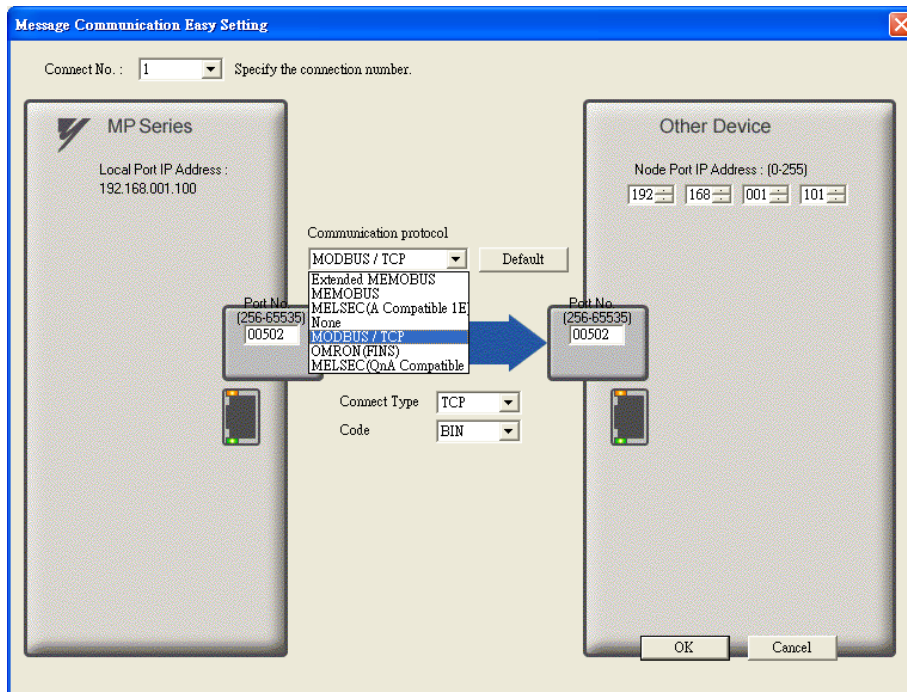


c) When you link with the MP Series Controller, please enter “Module Configuration” to set the CPU (218IFA) communication format:



d) Press the “Easy Setting” and then set its communication format as “Modbus/TCP”.



**NOTE:**

Please make sure the Linking Port Number of HMI and MP Software setting must be same.

2) HMI setting:

Select 【Direct Link [Ethernet]】 & 【Device/Server : Yaskawa Corporation → ModBus Device/Slave (TCP/IP)】

Link Properties

General | Parameter

Link Number: 1

Link Name: Yaskawa Ethernet Link

Link Type: Direct Link (Ethernet)

Device/Server: Yaskawa Corporation

ModBus Device/Slave (TCP/IP): ModBus Device/Slave (TCP/IP)

Link Port: Ethernet1

The duration of showing a communication error message: 5 second(s)

OK Cancel Help

Set the IP Address "192.168.1.100" (Refer to MP Software Parameter IP Setting) and its Port same like Yaskawa software setting.

Link Properties

General | Parameter

IP Address: 192.168.1.100

Use Default Port

Port: 502

Node Address: 1

Timeout Time: 0 (x 0.1 Sec.)

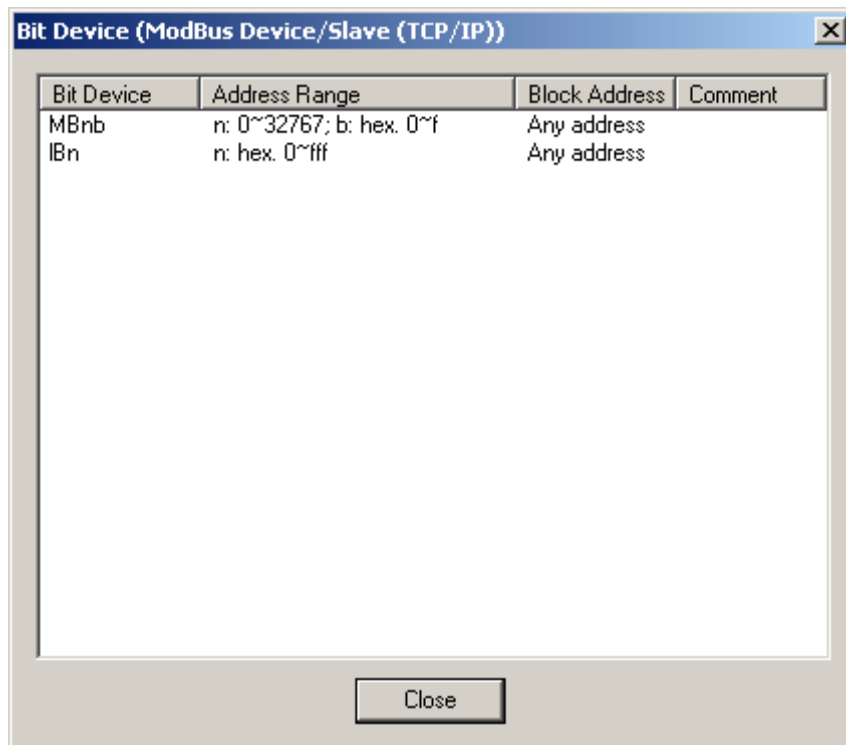
Command Delay: 0 (x 0.1 Sec.)

Retry Count: 0

OK Cancel Help

3) PLC Memory Address

Bit Devices:



Word Devices:

