

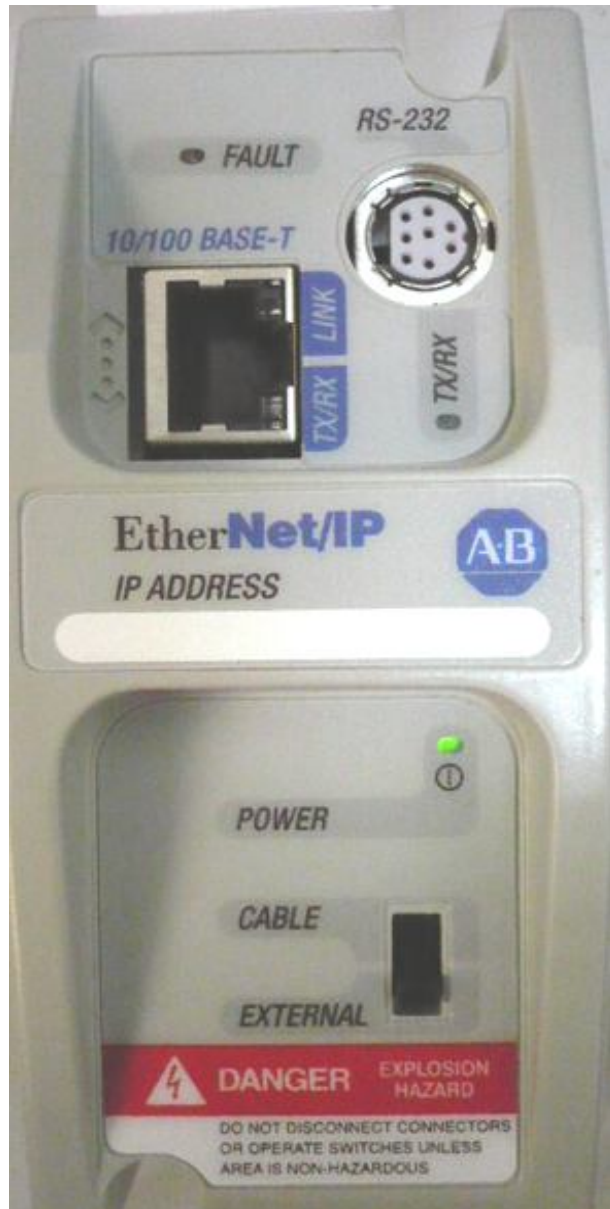
Tech. Note

Communication Settings of AB MicroLogix Series Ethernet Module

Preface

This tech note is to explicate how to connect AB Ethernet Module with PanelMaster as well as the related communication parameter settings.

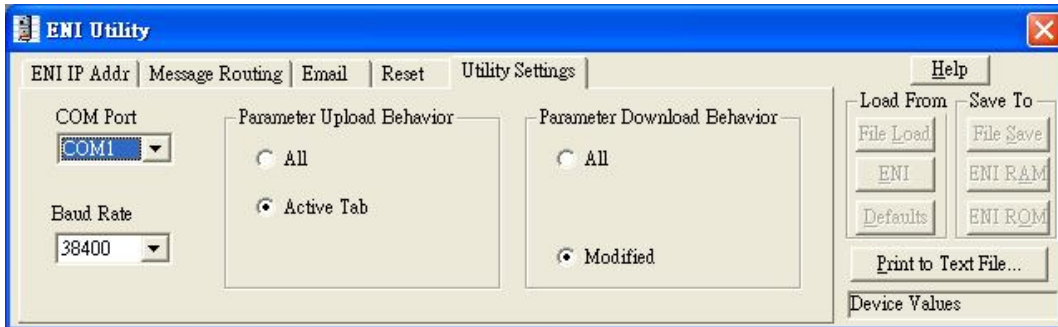
**AB Ethernet Module
1761-NET-ENI**



1) Software Parameter Settings

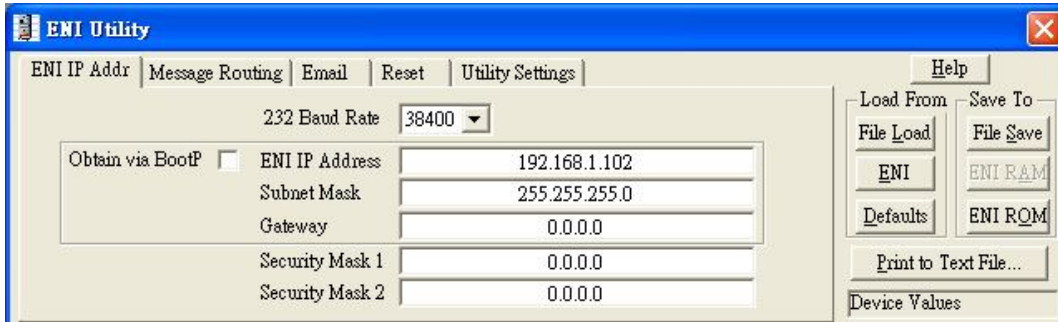
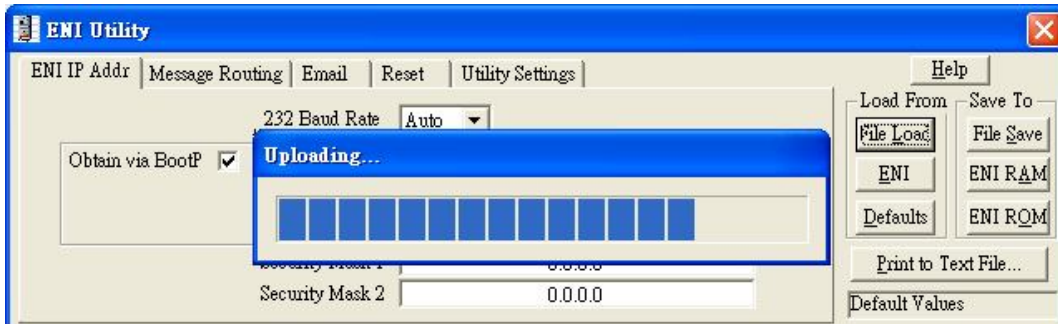
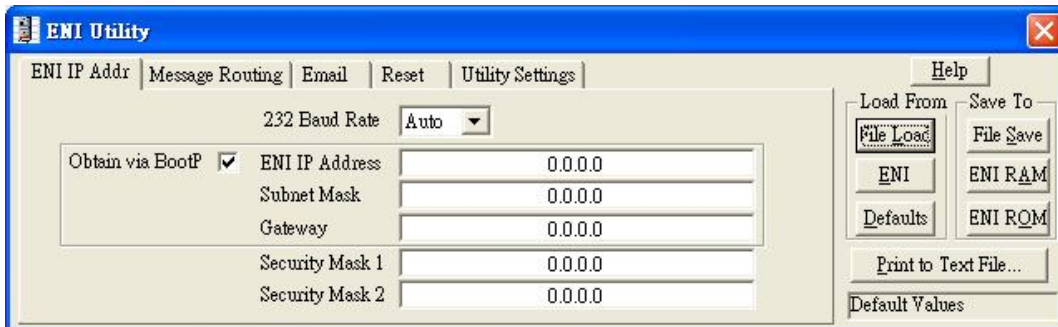
(a) Open Rockwell Software --- Set Ethernet Module parameters in ENI Utility

Step 1: Click "Start"---"All Program" --- "ENI Utility" --- ENI Utility tool (as illustrated below)

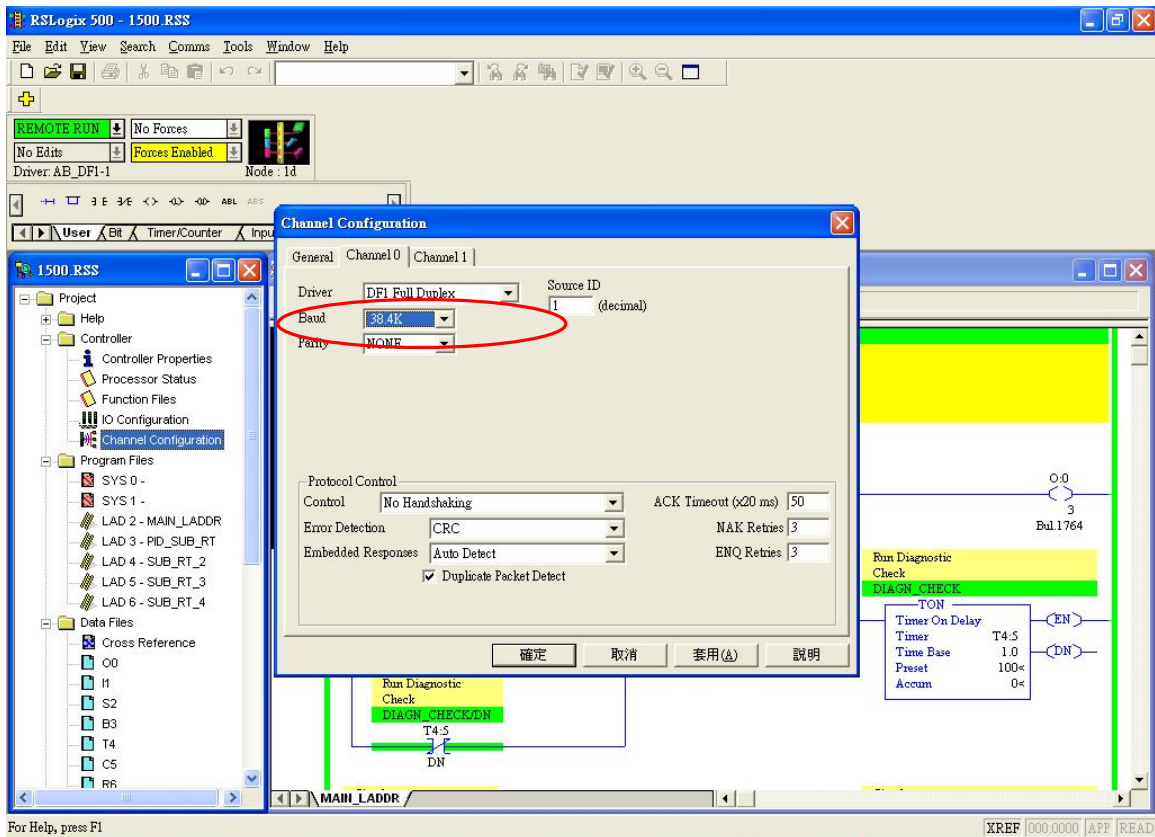


1761-NET-ENI default setting of Baud Rate is 38,400k bps

Step 2: Select ENI IP Address page and then press "Load From"---"ENI" to load module IP address.

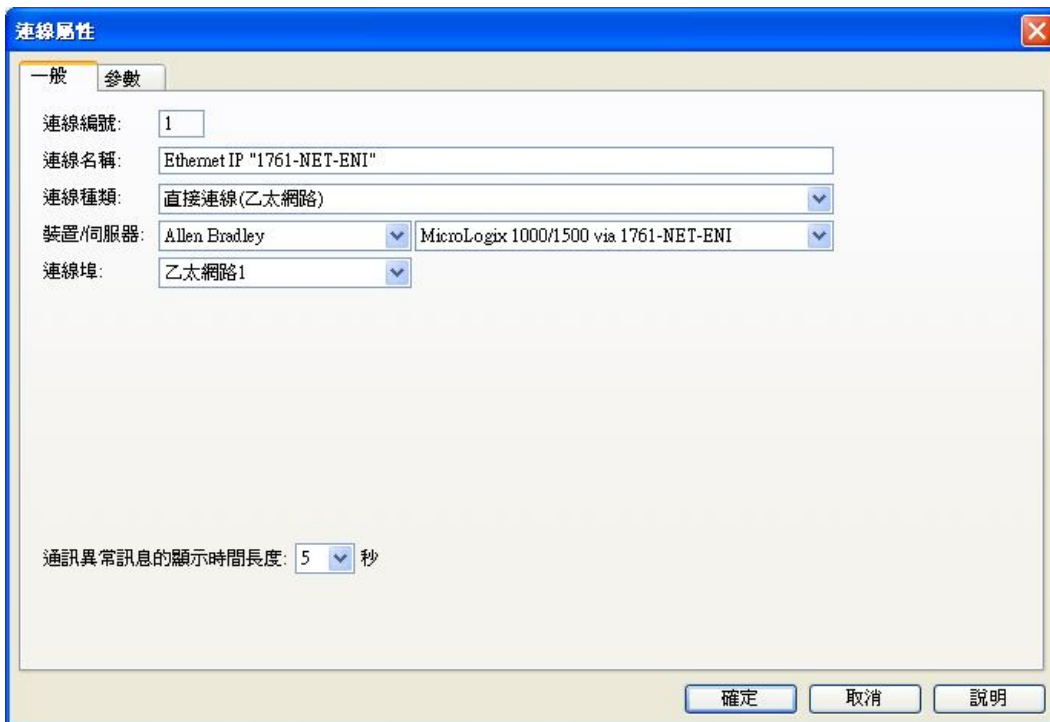


Step 3: Because Ethernet IP module needs to connect with CPU to transfer data, the CPU port baud rate parameter must be identical with the serial port of Ether IP module. **[Important]**



2) Parameters Setting of HMI:

Select **【Direct Link(Ethernet)】** --- **【Device/Server : Allen Bradley → SLC 5/03, 5/04】**



連線屬性

一般 參數

連線編號: 1

連線名稱: Ethernet IP "1761-NET-ENI"

連線種類: 直接連線(乙太網路)

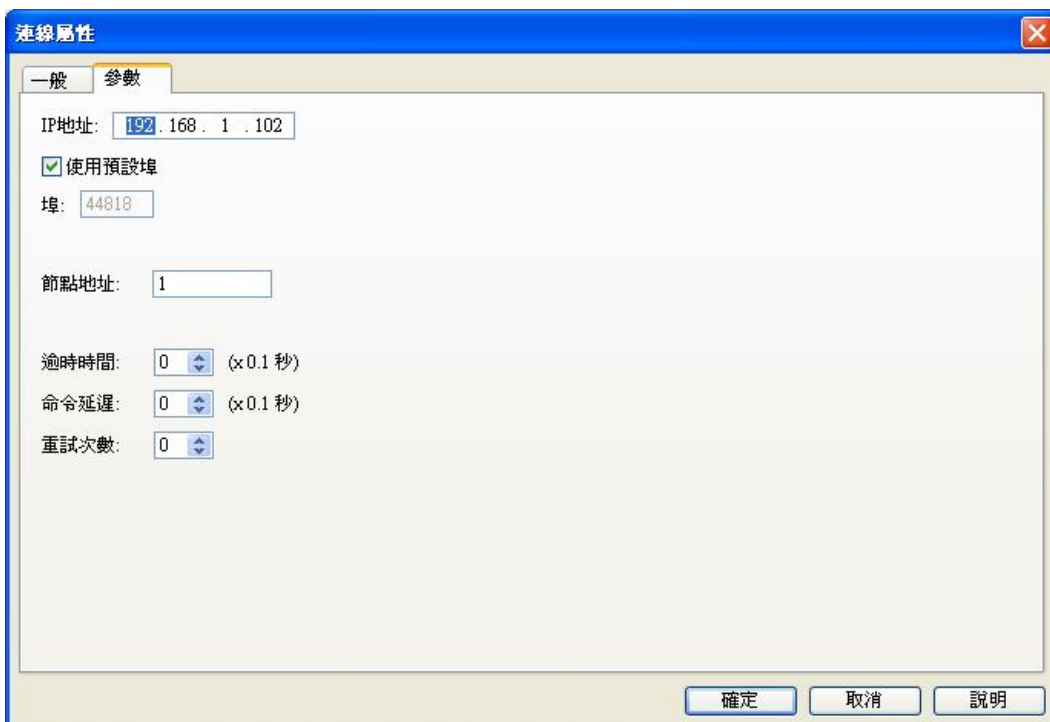
裝置/伺服器: Allen Bradley MicroLogix 1000/1500 via 1761-NET-ENI

連線埠: 乙太網路1

通訊異常訊息的顯示時間長度: 5 秒

確定 取消 說明

Set the HMI link port parameter identical with PLC communication parameter



連線屬性

一般 參數

IP地址: 192.168.1.102

使用預設埠

埠: 44818

節點地址: 1

逾時時間: 0 (x0.1 秒)

命令延遲: 0 (x0.1 秒)

重試次數: 0

確定 取消 說明

3) PLC Address

Bit Devices:

位元件/位置	地址範圍	區塊地址	說明
O.e.s/b	e: 0~9; s: 0~255; b: 0~15	N/A	
I.e.s/b	e: 0~9; s: 0~255; b: 0~15	N/A	
Sfn/b	n: 0~65; f: 2; b: 0~15	b=0	
Bfn/b	n: 0~255; f: 3, 9~255; b: 0~15	b=0	
Tfn/b	n: 0~255; f: 4, 9~255; b: 0~15	b=0	
Tfn.PRE/b	n: 0~255; f: 4, 9~255; b: 0~15	b=0	
Tfn.ACC/b	n: 0~255; f: 4, 9~255; b: 0~15	b=0	
Tfn/EN	n: 0~255; f: 4, 9~255	N/A	
Tfn/TT	n: 0~255; f: 4, 9~255	N/A	
Tfn/DN	n: 0~255; f: 4, 9~255	N/A	
Cfn/b	n: 0~255; f: 5, 9~255; b: 0~15	b=0	
Cfn.PRE/b	n: 0~255; f: 5, 9~255; b: 0~15	b=0	
Cfn.ACC/b	n: 0~255; f: 5, 9~255; b: 0~15	b=0	
Cfn/CU	n: 0~255; f: 5, 9~255	N/A	
Cfn/CD	n: 0~255; f: 5, 9~255	N/A	
Cfn/DN	n: 0~255; f: 5, 9~255	N/A	
Cfn/OV	n: 0~255; f: 5, 9~255	N/A	
Cfn/UN	n: 0~255; f: 5, 9~255	N/A	
Cfn/UA	n: 0~255; f: 5, 9~255	N/A	
Rfn/b	n: 0~255; f: 6, 9~255; b: 0~15	b=0	
Rfn.LEN/b	n: 0~255; f: 6, 9~255; b: 0~15	b=0	
Rfn.POS/b	n: 0~255; f: 6, 9~255; b: 0~15	b=0	
Rfn/EN	n: 0~255; f: 6, 9~255	N/A	
Rfn/DN	n: 0~255; f: 6, 9~255	N/A	
Rfn/ER	n: 0~255; f: 6, 9~255	N/A	
Rfn/UL	n: 0~255; f: 6, 9~255	N/A	
Rfn/IN	n: 0~255; f: 6, 9~255	N/A	
Rfn/FD	n: 0~255; f: 6, 9~255	N/A	
Nfn/b	n: 0~255; f: 7, 9~255; b: 0~15	b=0	

關閉

Word Devices: