

GUIDA ALLA CONNESSIONE E SETTAGGIO HMI/PLC

Comunicazione tra HMI Kite e PLC CP1L CP1H



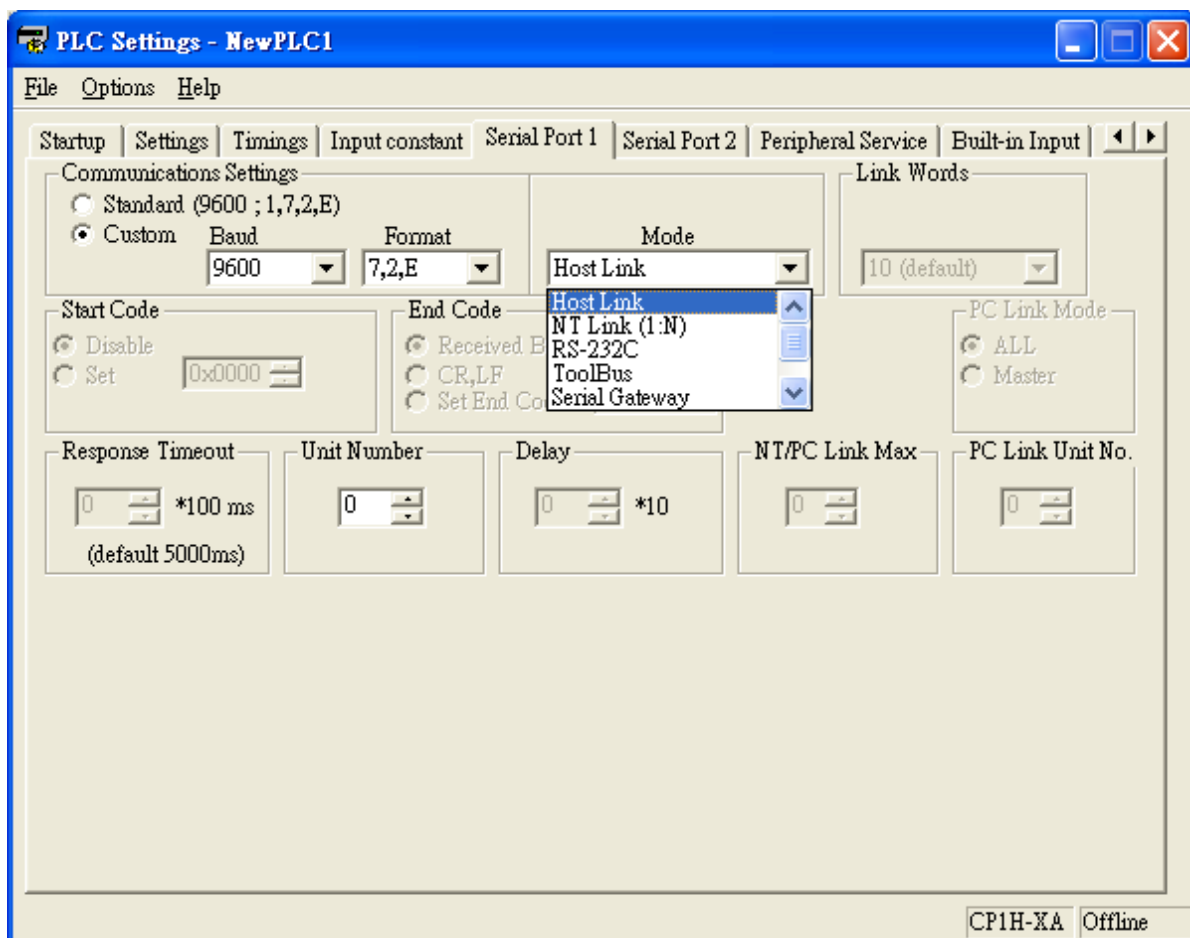
HMI COM Connection (DB9 Male)	PIN		PIN	PLC (CJ1W/CP1W-CIF11) COM Connection (RS422)
TX +	1	↔	2	RDB +
RX +	4	↔	4	SDB +
TX -	6	↔	1	RDA -
RX -	9	↔	3	SDA -

HMI COM Connection (DB9 Male)	PIN		PIN	PLC COM Connection (RS485)
TX +	1	↔	2	RDB +
TX -	6	↔	1	RDA -

**** Controllare sempre che gli switch 4-5 siano posizionati correttamente (on), il settaggio errato non fa comunicare il PLC con l'HMI.**

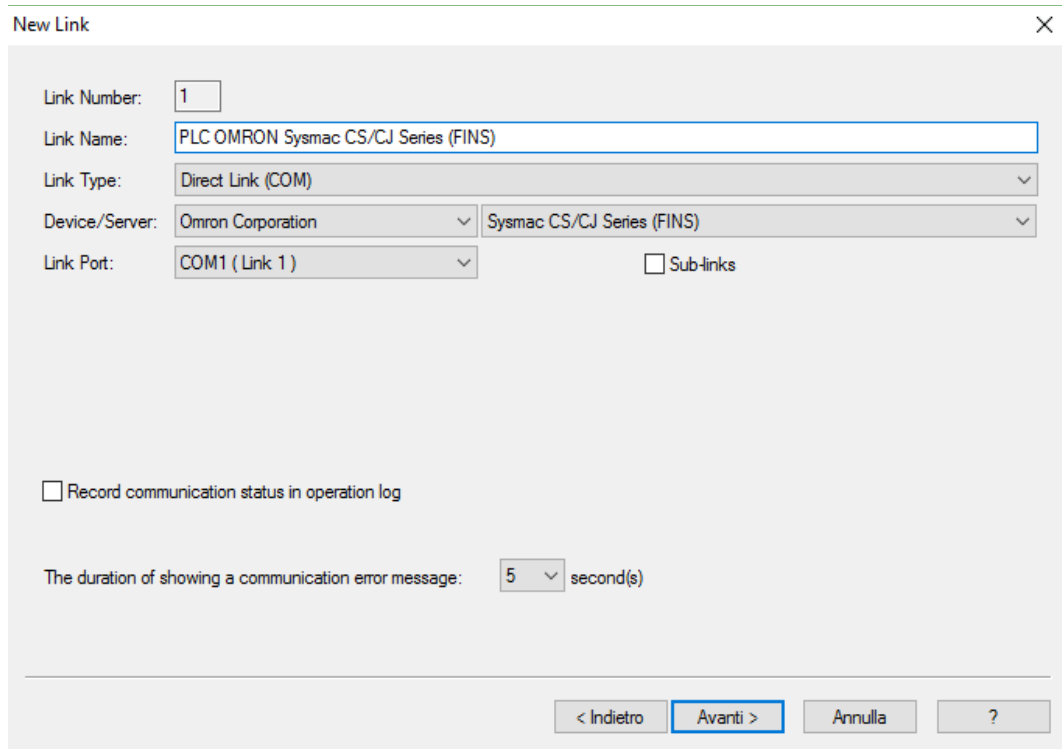
Configurazioni PLC OMRON CP1L / CP1H

1. Connettere il PLC al PC tramite la porta USB e utilizzare il software "CX Programmer" per settare i parametri del PLC CP1L/CP1H, Doppio clic su "Setting " per impostare il formato di comunicazione della porta seriale. Standard (9600,1 ,7 ,2 , E) o Personalizzata (Baudrate; Formato; Modalità: Host Link ; Unità N.)



Configurazioni HMI

1. Selezionare il **Link Type**: Direct Link (COM) e il **Device/Server**: Omron Corporation – Sysmac CS/CJ Series (FINS)

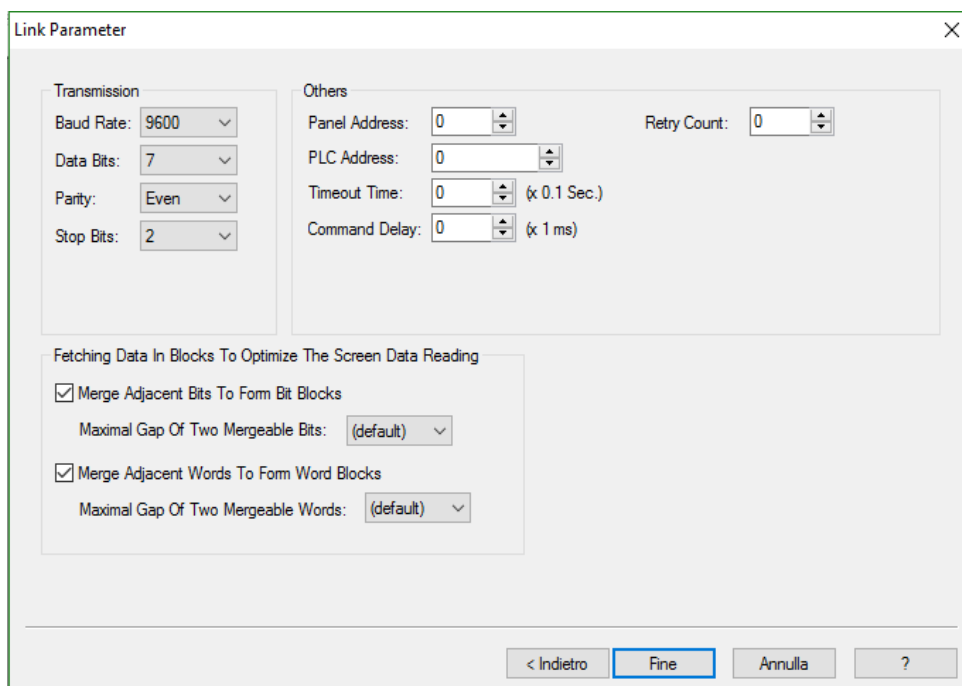


The 'New Link' dialog box contains the following fields and options:

- Link Number: 1
- Link Name: PLC OMRON Sysmac CS/CJ Series (FINS)
- Link Type: Direct Link (COM)
- Device/Server: Omron Corporation (dropdown) / Sysmac CS/CJ Series (FINS) (dropdown)
- Link Port: COM1 (Link 1) (dropdown) Sub-links
- Record communication status in operation log
- The duration of showing a communication error message: 5 second(s)

Navigation buttons: < Indietro, Avanti >, Annulla, ?

2. Impostare il parametro HMI di collegamento uguale al parametro di comunicazione PLC



The 'Link Parameter' dialog box is divided into several sections:

- Transmission:** Baud Rate: 9600, Data Bits: 7, Parity: Even, Stop Bits: 2
- Others:** Panel Address: 0, PLC Address: 0, Timeout Time: 0 (x 0.1 Sec.), Command Delay: 0 (x 1 ms), Retry Count: 0
- Fetching Data In Blocks To Optimize The Screen Data Reading:**
 - Merge Adjacent Bits To Form Bit Blocks
Maximal Gap Of Two Mergeable Bits: (default)
 - Merge Adjacent Words To Form Word Blocks
Maximal Gap Of Two Mergeable Words: (default)

Navigation buttons: < Indietro, Fine, Annulla, ?